



T/E School District

SCHOOL ACCESS AND INTERNAL CIRCULATION ASSESSMENT

April 18, 2017

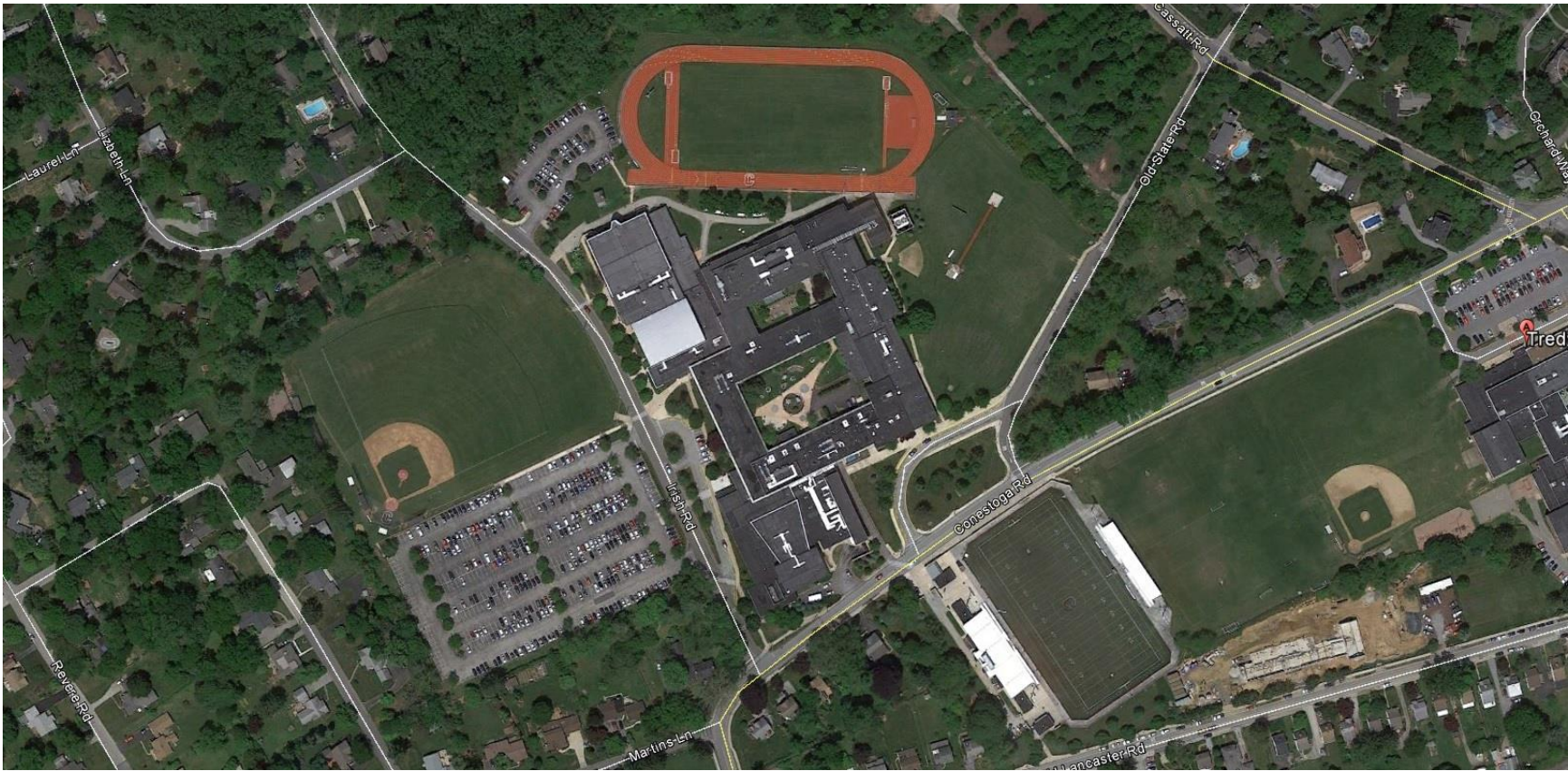
Presented By: Greg Richardson, P.E.

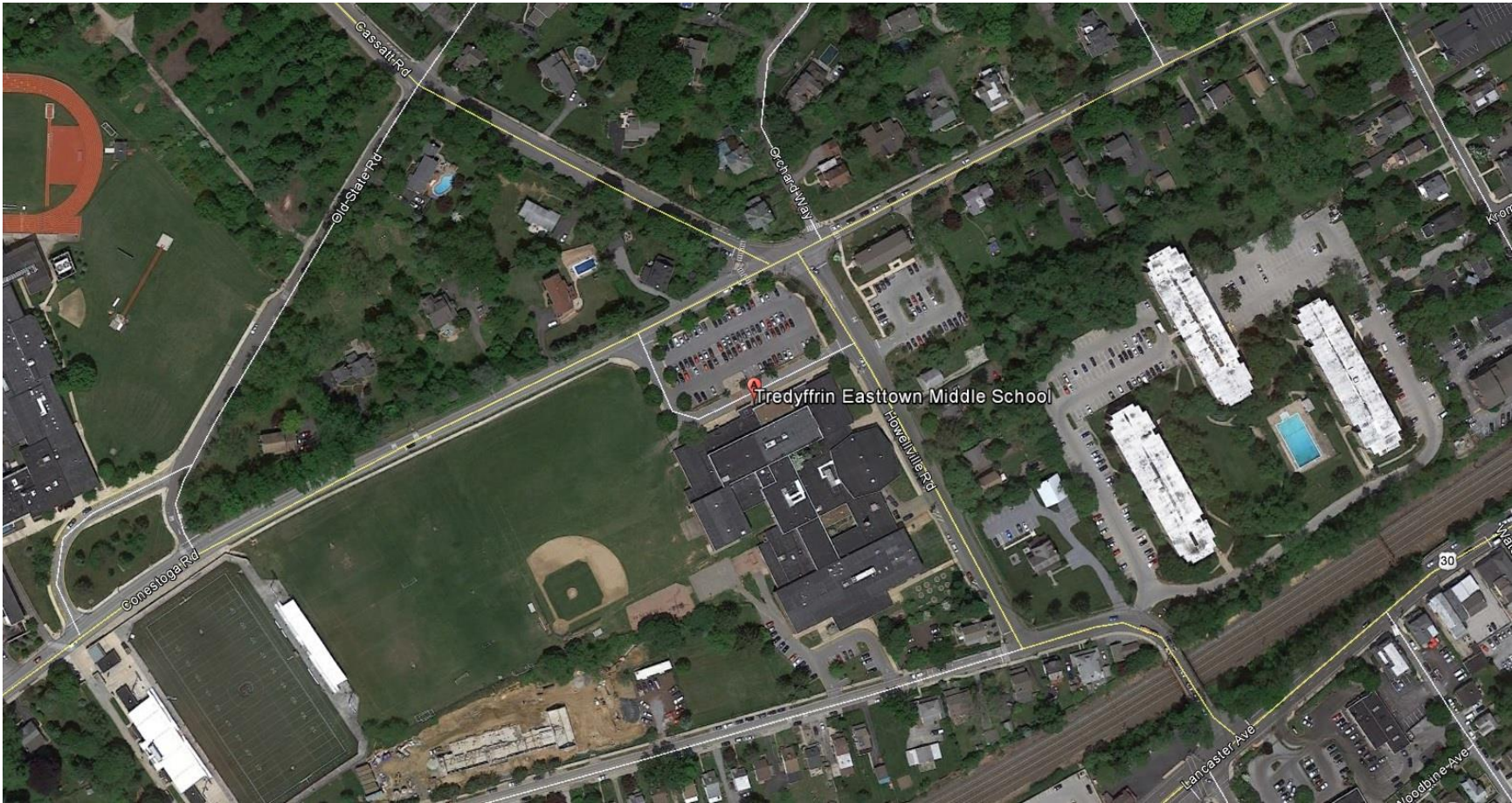
LOCATIONS

Allentown | Camden | Doylestown | Harrisburg | Philadelphia | Pittsburgh | Pottstown | West Chester

- To Conduct an Access and Internal Circulation Assessment
- Determine Short-Term/Long-Term Enhancements to Facilitate Traffic Flow
- Obtain Community Input

Conestoga High School

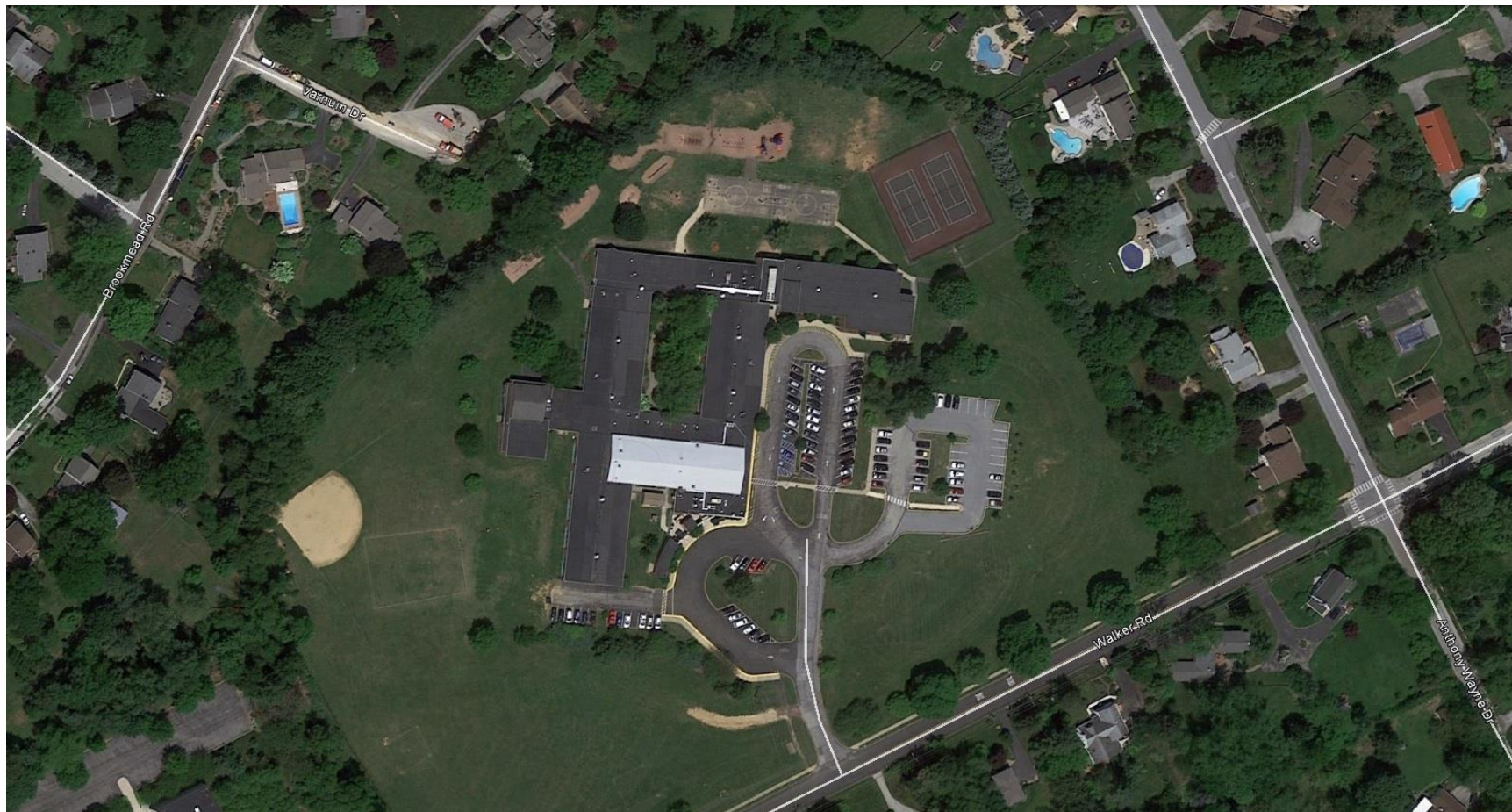




Valley Forge Middle School



Valley Forge Elementary School



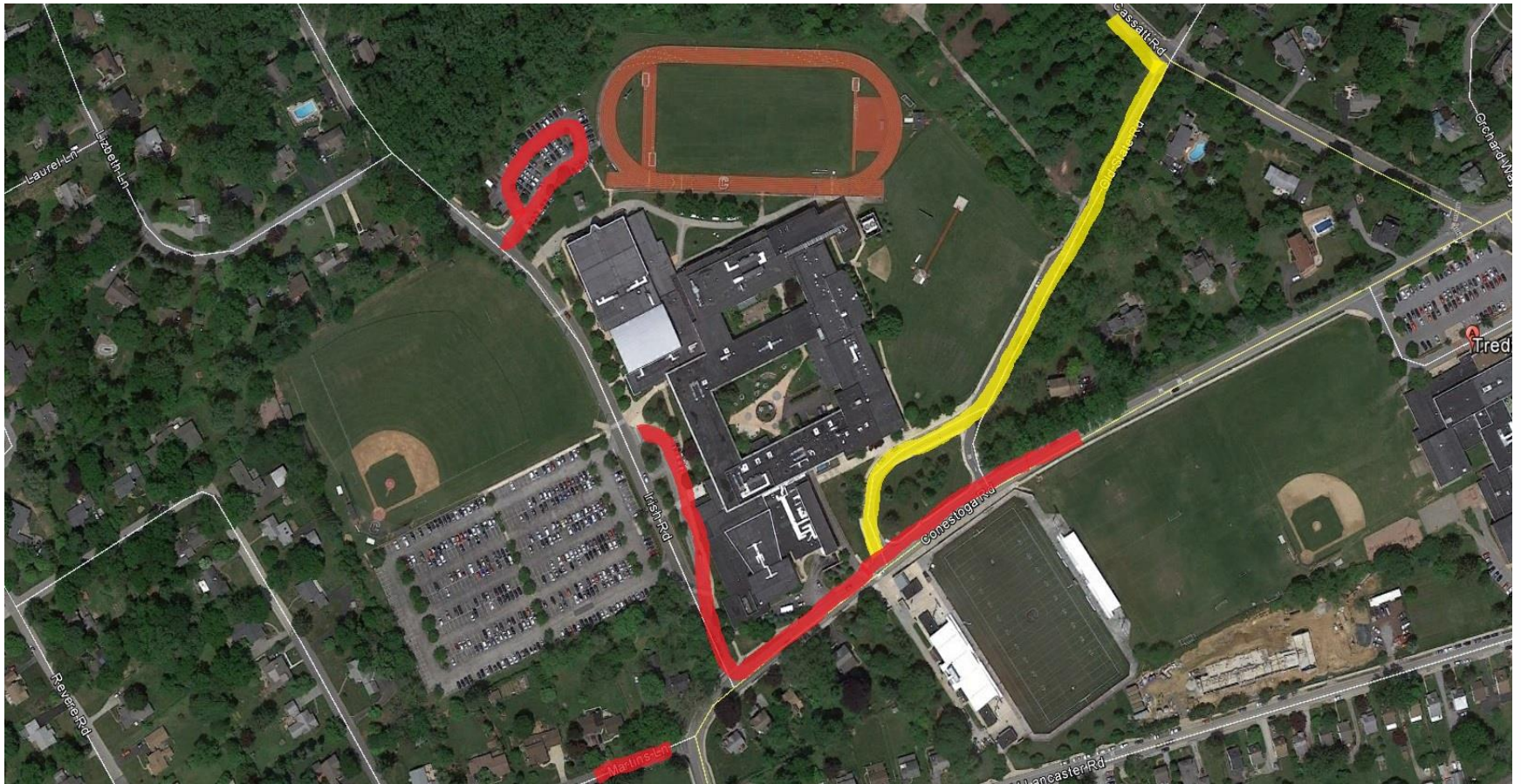
- **Conestoga High School**
 - Wednesday, February 22, 2017
 - ❖ 6:30 A.M. – 8:00 A.M.
 - ❖ 1:30 P.M. – 5:30 P.M.

- **T/E Middle School**
 - Tuesday, March 7, 2017
 - ❖ 6:30 A.M. – 8:00 A.M.
 - ❖ 1:30 P.M. – 5:30 P.M.

- **Valley Forge Middle School**
 - Thursday, January 12, 2017
 - ❖ 6:00 A.M. – 6:00 P.M.

- **Valley Forge Elementary School**
 - Tuesday, April 4, 2017
 - ❖ 7:30 A.M. – 9:30 A.M.
 - ❖ 2:30 P.M. – 4:30 P.M.

Conestoga High School – Vehicle Routes



Buses

Passenger Vehicles

T/E Middle School – Vehicle Routes

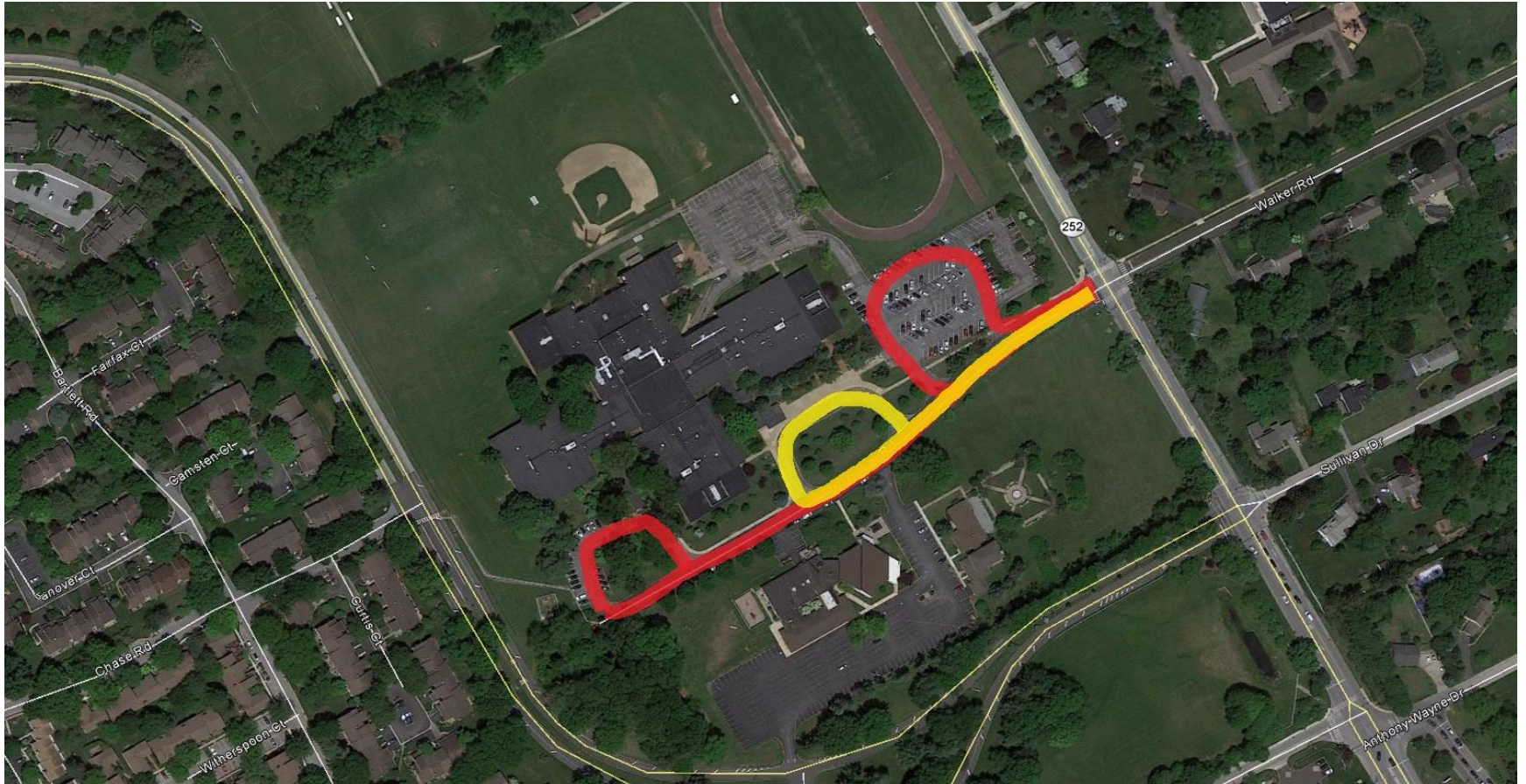


Buses



Passenger Vehicles

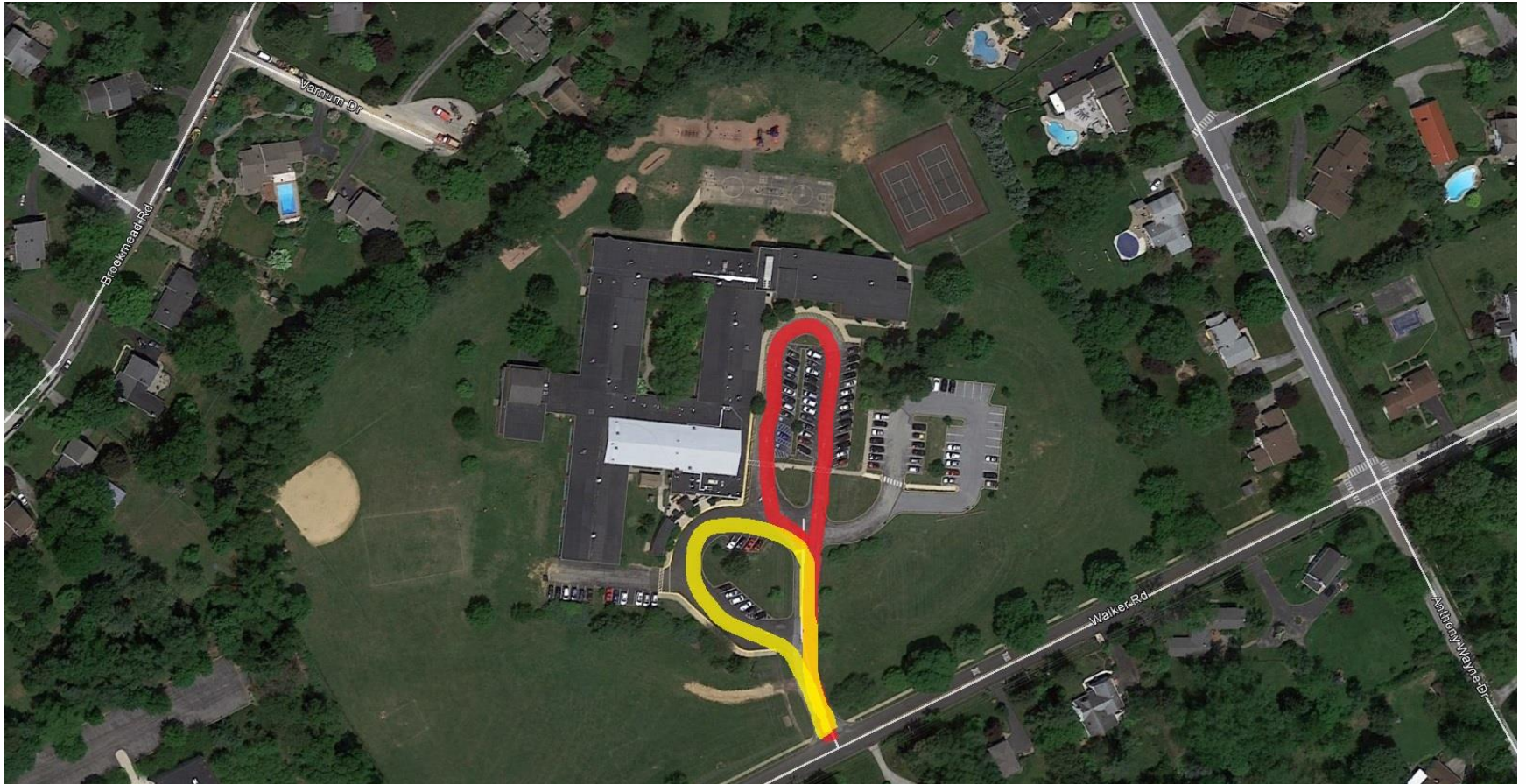
Valley Forge Middle School – Vehicle Routes



Buses

Passenger Vehicles

Valley Forge Elementary School – Vehicle Routes



Buses

Passenger Vehicles

- Adequacy of Parking Lots
- Driveway Access
- Arrival/Dismissal Times
- Bus Traffic
- Non-Bus Traffic
- Pedestrians
- Crossing Guards
- Traffic Control and Enforcement

T/E School District Online Survey

| School | Responses |
|--------------------------------|------------|
| Conestoga High School | 256 |
| T/E Middle School | 143 |
| Valley Forge Middle School | 169 |
| Valley Forge Elementary School | 127 |
| Total: | 695 |

Conestoga High School – WB Conestoga Rd. - AM



2017-02-23 7:20:08 AM

Conestoga High School – NB Irish Road - AM



2017-02-23 7:01:02 AM

Conestoga High School – SB Irish Road - AM



Conestoga High School – NB Irish Road - PM



Conestoga High School – SB Irish Road - PM



Conestoga High School – Bus Loop/Conestoga Rd. - PM



Conestoga High School – Bus Loop/Old State Rd. - PM



T/E Middle School – Bus Loop/Conestoga Road - AM



T/E Middle School – Parent Drop-Off/O. Lancaster Rd. - AM



T/E Middle School – Bus Loop/Conestoga Road - PM



T/E Middle School – Parent Pick-Up/O. Lancaster Rd. - PM



Valley Forge Middle School – AM



Valley Forge Middle School – Walker/Rt. 252 - AM



Valley Forge Middle School – PM



Valley Forge Elementary School – Bus Loop - PM



Valley Forge Elementary School – EB Walker Rd. - AM



Valley Forge Elementary School – WB Walker Rd. - AM



Valley Forge Elementary School – EB Walker Rd. - PM



Valley Forge Elementary School – WB Walker Rd. - PM



- Significant Vehicle Queues (internally and on public roadways)
- Illegal Turning Movements
- Improper Lane Usage
- Use of Improper Drop-Off and Pick-Up Areas
- Bus vs. Parent Vehicle Ratio
- Bus vs. Parent Vehicle Segregation

Potential Programmatic Enhancements

- Bus Schedule/Ride Time Evaluation
- Student Dismissal - Buses vs. Other Vehicles
- Additional Staff in the drop-off/pick-up areas
- Student Dismissal Times (e.g. Conestoga High School and T/E Middle School).
- Additional Crossing Guards
- Municipal Enforcement of Existing Parking Restrictions
- Potential Grant Funding Opportunities

➤ Conestoga High and T/E Middle Schools

- Bus Turnaround Area for sports team buses
- Additional Bus/Vehicle Queue Lane on Old State Road
- Vehicle Queue Area on Conestoga Road
- EB Conestoga Road Left Turn Lane at Cassatt Road
- Review/Modify Traffic Signal Operations
- T/E Middle School Additional Parking Lot and Queue Lane

➤ Valley Forge Middle School

- Secondary Driveway to Chesterbrook Boulevard
- EB Walker Road Right Turn Lane
- SB Valley Forge Road Right Turn Lane

➤ Valley Forge Elementary School

- Secondary Driveway
- WB Walker Road Right Turn Lane
- EB Walker Road Left Turn Lane
- Widen Existing Driveway

Visit Us on the Web



www.TrafficPD.com



LOCATIONS

Allentown | Camden | Doylestown | Harrisburg | Philadelphia | Pittsburgh | Pottstown | West Chester